



# LAE I LAE POINT TO POINT

Lae I Lae, a newsletter from the **Hawaii Land Surveyors Association**, an affiliate and a member with the National Society of Professional Surveyors

EMAIL: [hlsa-hawaii@outlook.com](mailto:hlsa-hawaii@outlook.com) WEBSITE: [www.hlsahawaii.org](http://www.hlsahawaii.org)

COMPRISED OF APPROXIMATELY 70% OF THE LICENSED LAND SURVEYORS IN HAWAII OUR OBJECTIVE IS TO BRING TOGETHER THE LAND SURVEYING COMMUNITY THROUGH EDUCATION AND TO PROVIDE NETWORKING OPPORTUNITIES AND BUSINESS RESOURCES.



---

# 2023 PACIFIC RIM GEOSPATIAL CONFERENCE

**HLSA :: ASPLS :: HIGICC**

---

IN-PERSON AND VIRTUAL CONFERENCE  
2023 PACIFIC RIM GEOSPATIAL CONFERENCE  
March 16th (Thursday) & 17th (Friday)  
Ala Moana Hotel, Honolulu Hawaii



**FOR HLSA MEMBERSHIP DISCOUNT, REGISTER TO  
BECOME A MEMBER:**

**[HLSA](#)**

**PLEASE VISIT [HTTPS://PACIFICRIMGEOSPATIAL.COM/](https://pacificrimgeospatial.com/)  
FOR CONFERENCE SCHEDULE AND SPEAKERS**



# 2023 PACIFIC RIM GEOSPATIAL CONFERENCE

"Legacy - Past, Present, Future"

DAY 1 - THURSDAY, MARCH 16

Preliminary Schedule as of 02/24/2023  
 Times, Topics, Speakers are subject to change.  
 (Times Shown are in Hawaii Standard Time)

WELCOME (8:15 - 8:45)	HIBISCUS BALLROOM II (Hybrid - Virtual/In-Person)	ILIMA	CARNATION (Virtual Only)	PLUMERIA	ANTHURIUM
SPEAKER	Amanda Allred				
MEETINGS (8:50 - 9:20)	HIBISCUS BALLROOM II (Hybrid - Virtual/In-Person)	ILIMA	CARNATION (Virtual Only)	PLUMERIA	ANTHURIUM
TOPIC	Hawaii Land Surveyors Association Membership Meeting	Hawaii Geographic Information Coordinating Council Membership Meeting	(Closed)	(Closed)	(Closed)
BREAKOUT 1 (9:30 - 10:20)	HIBISCUS BALLROOM II (Hybrid - Virtual/In-Person)	ILIMA	CARNATION (Virtual Only)	PLUMERIA	ANTHURIUM
TOPIC	maritime boundary	Powerline and Utility mapping using Airborne Lidar	CFedS Standards of Practice	Federal Data Discovery and Integrated Open Source Tools	Public Lands Survey System (PLSS)
SPEAKER		Craig Clouet		Andy McGowan	
TOPIC		How to Add GIS Data PDF Reports to Your ArcGIS Web Apps		Esri Highlights	
SPEAKER		James Van Dyk		Gretchen Chiques	
TOPIC		Satellites for coastal monitoring of Hawaii's beaches		All you want to know about USACE Brass Disks	
SPEAKER	Scott Sweet	Joel Nicolow	Tasha Hulita & Glen Thurow	Sarah Falzarano	Matthew Vernon
<b>COFFEE BREAK 10:20 - 10:50</b>					
BREAKOUT 2 (10:55 - 11:55)	HIBISCUS BALLROOM II (Hybrid - Virtual/In-Person)	ILIMA	CARNATION (Virtual Only)	PLUMERIA	ANTHURIUM
TOPIC	Maintaining Cadastral Measurement Data in ArcGIS	HICRIS: The Hawai'i Cultural Resource Information System	CFedS Standards of Practice	Drones for Surveying	Computer science applied to surveying, Part 1
SPEAKER	Christine Leslie	Michael Wahl	Tasha Hulita & Glen Thurow	David Drummond	Troy Hicks
<b>12:00 - 1:00 Lunch (Video? Slideshow?)</b>					
BREAKOUT 3 (1:10 - 2:10)	HIBISCUS BALLROOM II (Hybrid - Virtual/In-Person)	ILIMA	CARNATION (Virtual Only)	PLUMERIA	ANTHURIUM
TOPIC	Elevation Certificate Basics	Creating parcels from CAD data in ArcGIS	CFedS Standards of Practice	Improve your Workflows with the Latest Advancements in Data Collection Technology!	Computer science applied to surveying, Part 2
SPEAKER	Becca Fricke-Croft	Christine Leslie	Tasha Hulita & Glen Thurow	Tommy Nichols	Troy Hicks
<b>COFFEE BREAK 2:10 - 2:40</b>					
BREAKOUT 4 (2:45 - 3:25)	HIBISCUS BALLROOM II (Hybrid - Virtual/In-Person)	ILIMA	CARNATION (Virtual Only)	PLUMERIA	ANTHURIUM
TOPIC	Elevation Certificate Potential Changes	Land Court Deregistration	CFedS Standards of Practice	Improve your Workflows with the Latest Advancements in Data Collection Technology!	Agisoft Metashape Workflow (USGS Method)
SPEAKER	Becca Fricke-Croft	Meyer Cummins	Tasha Hulita & Glen Thurow	Tommy Nichols	Troy Hicks
BREAKOUT 5 (3:35 - 4:35)	HIBISCUS BALLROOM II (Hybrid - Virtual/In-Person)	ILIMA	CARNATION (Virtual Only)	PLUMERIA	ANTHURIUM
TOPIC	Building Diagrams and some Elevation Certificate common errors / Jeopardy Game	Designing Effective ArcGIS Dashboards	Update on ACORN	Legislative Efforts	Evaluation of large datasets using advanced math and statistics for surveying
SPEAKER	Becca Fricke-Croft	Allan Vinluan	Peter Flint	Meyer Cummins	Troy Hicks
<b>6:00 - 10:00 HLSA INSTALLATION BANQUET</b>					



# 2023 PACIFIC RIM GEOSPATIAL CONFERENCE

"Legacy - Past, Present, Future"

DAY 2 - FRIDAY, MARCH 17

Preliminary Schedule as of 02/24/2023  
Times, Topics, Speakers are subject to change.  
(Times Shown are in Hawaii Standard Time)

WELCOME (8:30 - 10:45)	HIBISCUS BALLROOM II (Hybrid - Virtual/In-Person)	ILIMA	CARNATION (Virtual Only)	PLUMERIA	ANTHURIUM
TOPIC	TBD	(Closed)	(Closed)	(Closed)	(Closed)
SPEAKER	TBD				
BREAKOUT 1 (9:30 - 10:20)	HIBISCUS BALLROOM II (Hybrid - Virtual/In-Person)	ILIMA	CARNATION (Virtual Only)	PLUMERIA	ANTHURIUM
TOPIC		Impact of Sea Level Rise on Aging Population Accessibility to Essential Service in Honolulu, Hawaii		Hawai'i Island Coastal Mapping	Cartography Quest: How To Make Professional Looking Map
SPEAKER		Dingyi Liu		Ryan Perroy	
TOPIC	State Plane Coordinate System Modernization Updates (SPCC 2022)	The framework for community resilience hub planning on Oahu using GIS	National Imagery	Developing an Autonomous Data Collection System	Gretchen Chiques
SPEAKER		Kinzang Dorji		Matt Cunningham, Noli Gamiao, Logan Green, Michael Arms	Understanding the World Around Us Using Geographic Data
TOPIC		Utilizing Available Data to Spatially Represent Parcel Boundaries - Best Practices & Challenges		Past and Present: Examining Land Use Change over Time Using Aerial Imagery	
SPEAKER	Michael Dennis	Elisse Deleissegues	Tony Kimmert	Stephanie Clarke, Luke Shideler	Gretchen Chiques
COFFEE BREAK 10:20 - 10:50					
BREAKOUT 2 (10:55 - 11:55)	HIBISCUS BALLROOM II (Hybrid - Virtual/In-Person)	ILIMA	CARNATION (Virtual Only)	PLUMERIA	ANTHURIUM
TOPIC	Business & Marketing for Land Surveyors & GIS Professionals	Laser Scanning for Survey: Terrestrial and Airborne Options	GNSS-R: Measuring Tides with Reflectometry at JOA Surveys - Separating Theory from Practice	NSPS - TBD	hydrographic survey/mapping
SPEAKER	Matthew Vernon	Steve Hochart & Erick Wenceslao	Jim Mitchell	Amanda Allred	Morgan Stephenson
12:00 - 1:00 Lunch (Video? Slideshow?)					
BREAKOUT 3 (1:10 - 2:10)	HIBISCUS BALLROOM II (Hybrid - Virtual/In-Person)	ILIMA	CARNATION (Virtual Only)	PLUMERIA	ANTHURIUM
TOPIC	Alaska Native Claims Settlement Act 14(c) Surveys	sUAS for Surveying I - Prep for Part 107 Cert. / sUAS for Surveying II - Planning & Execution	Typhoon Merbok response data collection	Boundary Survey	Frontier Precision: GNSS Modernization - "New Signals in Space"
SPEAKER	Dela Grey	Bernardo Gonzalez	Jaci Overbeck	Andy Harada	Robert Green
COFFEE BREAK 2:10 - 2:40					
BREAKOUT 4 (2:45 - 3:25)	HIBISCUS BALLROOM II (Hybrid - Virtual/In-Person)	ILIMA	CARNATION (Virtual Only)	PLUMERIA	ANTHURIUM
TOPIC	Elevation Certificate Basics	Highlights of the 2021 American Land Title Association Title Insurance Policy Forms	Braided Rivers	Hawaii Vertical Datums, Modernization, and Hawaii's new RTK Network	Carlson Software - Drone To Map
SPEAKER	Becca Fricke-Croft	Lorrin Hirano	Brian Raynes	Edward Carlson & Christopher Guerin	Luis Rojas
BREAKOUT 5 (3:35 - 4:35)	HIBISCUS BALLROOM II (Hybrid - Virtual/In-Person)	ILIMA	CARNATION (Virtual Only)	PLUMERIA	ANTHURIUM
TOPIC	Elevation Certificate Common Errors		Braided Rivers		Carlson Software - Survey Basics (Field to Finish)
SPEAKER	Becca Fricke-Croft		Brian Raynes		Luis Rojas
4:35 - 6:35 PAU HANA					



# PRESIDENT'S MESSAGE

BY: VICTOR RASGADO, LPLS

Aloha HLSA members and supporters, on behalf of the HLSA Board of Directors, I wish you much Aloha and Mahalo for your continued support and membership.

The HLSA board continues to work diligently with the Alaska Society of Professional Land Surveyors (ASPLS) and the Hawaii Geographic Information Coordinating Council (HIGICC) to create a great and professional “in person” and “virtual” gathering and experience for the upcoming [2023 Pacific Rim Geospatial Conference](#), taking place at the Ala Moana Hotel in Honolulu, Hawaii on March 16th and 17th, 2023! Check out our Preliminary Conference and Speaker Agenda. [pacifirimgeospatial.com](http://pacifirimgeospatial.com)

Also, I wanted to pass on the HLSA board’s appreciation for our members rallying behind the **Right of Entry Bill** and providing testimony for both HB 1241 and SB 1468 to the House and Senate Committees. Please keep an eye out for our HLSA email updates and request for additional testimony as the two bills make their way through the legislature process. We should have an update on the Right of Entry Bill at the upcoming HLSA banquet.

## **HLSA Installation Banquet at the Jade Dynasty Restaurant March 16, 2023**

The HLSA is excited to announce the return of our in-person Installation Banquet happening 6:00 pm Thursday March 16, at the Jade Dynasty Seafood Restaurant in the Ala Moana Mall.

We are inviting you, our HLSA members and guests to join us for an evening of community celebration as we recognize the Installation of our 2023 HLSA Board of Directors and the Honoring of our Newly Licensed Hawaii Surveyors of 2020, 2021, and 2022.

For registration information and location please visit our [HLSA Banquet Page](#)

One of the most important events at the Installation Banquet is the appointment of our HLSA officers. If you are interested in being an officer or board of director member, please reach out to any of our [current board of directors](#) and let us know of your interest to serve and or volunteer.

## **Register for the 2023 Pacific Rim Geospatial Conference—Rates go up March 10, 2023**

There is still time to register for the 2023 Pacific Rim Geospatial conference before rates go UP March 10, 2023. To register for the conference, visit the [Conference Registration Page](#) and secure your spot.

For our HLSA members there is additional savings available if you are a current member. Please go to our website and signup to be a member! [HLSA Membership](#)



# PRESIDENT'S MESSAGE CONTINUATION

BY: VICTOR RASGADO, LPLS

I'd like to take a moment and personally thank members of The Joint Conference Committee, (volunteers from the HLSA, ASPLS, and HIGICC), who on a weekly basis have put in numerous volunteer hours and who continually bring the best ideas and team energy to ensure all our members experience the very First and Best Pacific Rim Geospatial Conference! Thank you, Joint Conference Committee!!

## **Our Proud Sponsors**

Vendors and Sponsors are a big reason for our past conference success and this year in no different. Check out [Our Proud Sponsors](#) who've signed up to support our Pacific Rim Geospatial Conference!

If your company or organization is interested in supporting the Pacific Rim Geospatial Conference, we have several options for your participation at the [Sponsor signup](#)

## **Hotel Accommodations**

For our outer island and out of state participants the Joint Conference Committee has secured a bank of 15 rooms available for our attendees. The Special Room rates at the Ala Moana Hotel are reserved for attendees and vendors who have registered for the 2023 Pacific Rim Geospatial Conference and the rates will be available two days before and after the conference and will be available on a first come basis. Please go to the 2023 Pacific Rim Geospatial Conference [Room Reservation](#)

## **Inspired Journey**

It's been a great and inspired journey to be part of the Joint Conference Committee and I'm grateful for being part of a great team of Geospatial Professionals from Alaska and Hawaii who've worked tirelessly to merge our organizations' paths to gather and learn as one.

For me, our Pacific Rim Geospatial Conference logo reflects our theme of Legacy – Past, Present, Future so perfectly. The combination of the whales, stars, and plumb bobs reminds me of how the early voyagers and survey forefathers used patterns in the environment and in the sky to map and explore our shared world; patterns that we continue to use and enjoy to this day and hopefully keep us moving forward together in a shared direction, long into the future.

With much appreciation and respect.

Victor M. Rasgado, LPLS

President, Hawaii Land Surveyors Association Board of Directors



## HLSA Report to WESTFED

January 02, 2023

By Joanne Williamson, LPLS

- President – Victor Rasgado
- \*Vice President – Cliff Yim
- Treasurer – Alika Garo
- Secretary – Brett Etheredge
- \*Director/NSPS Director – Joanne Williamson
- \*Director – Erick Wenceslao
- \*Director – Meyer Cummins
- Director – Tisha McKinney
- \*Past President – Christina Villa
- Director/Maui Liaison – Sherman “Dudley” DePonte
- \*Kauai Liaison – Dennis Esaki
- Big Island Liaison – Victor Rasgado

Our membership is slowly accreting!!

- ❖ Total Membership – 119
- ❖ Sustaining Members – 16

**WEBSITE** *New and Improved* <https://hlsahawaii.org/> A lot of time and effort went into the creation of the new website and migration of content from our earlier version. Much thanks to our treasurer and webmaster Alika Garo who spearheaded the efforts. The new platform is on “Star Chapter” and allows the HLSA board direct access to the content. It will keep our members up to date with job postings and event registration. There is a robust “Resource” area with links and information to a variety of sources.

**NEWSLETTERS** Our HLSA Newsletter got a makeover and looks gorgeous thanks to our Editor and Past President, Christina Villa. It is now available to members on our website.

**LEGISLATION** Senate Bill 1468 “Relating to the Right of Entry for Professional Surveyors” is being introduced by Senator Ron Kouchi. Our lobbyist, Jon Okudara, of Jon Okudara and Assoc. has drafted a bill to address the issue of trespass on adjacent properties. This bill authorizes professional land surveyors to enter any private property to perform land surveying, subject to certain provisions regarding notice, identification, and liability. It will shield land surveyors from prosecution under criminal trespass laws when performing their duties.

[https://www.capitol.hawaii.gov/sessions/session2023/bills/SB1468\\_.PDF](https://www.capitol.hawaii.gov/sessions/session2023/bills/SB1468_.PDF)

We are now reaching out to local stories to collect stories, etc. that we can educate the legislators as to the need for this legislation.

**CONFERENCE:** Pacific Rim Geospatial Conference “Legacy-Past, Present, Future” March 16-17, Ala Moana Hotel, Honolulu [Pacific Rim Geospatial Conference - Home](#)

This conference will be a joint conference with Alaska Society for Professional Land Surveyors (ASPLS) and Hawaii Geospatial Information Coordinating Council(HIGICC) The conference will be hybrid with some of the sessions streaming to allow for surveyors to attend across the miles. Amanda Allred, NSPS President, will be the keynote speaker.

**INSTALLATION BANQUET:** This will be at the Jade Dynasty Restaurant at Ala Moana on Thursday, March 16, following the day’s conference sessions. We look forward to Amanda Allred representing NSPS and installing the new Board of Directors.

**ANNUAL DINNER** This was held on Friday, Sept. 9, 2022, at Heeia State Park on the Windward side of Oahu. Costs were covered by donations from our sustaining members. The park is a beautiful setting out on the water, and allowed for a great evening of camaraderie for our land surveying community. The afternoon was spent in teams of two, with the buddies measuring ‘old school style’ on the shorefront. Kudos to our president and secretary for setting up the course. Teams were tasked with measuring from point to point and calculated the area of the irregular shaped lot. Afterwards our dinner was Chinese food from a local favorite takeout, Chun Wah Kam, with plenty of refreshments to go with it. Then Nick Bradley with “Stargazers of Hawaii” provided a stellar experience viewing the moon and Saturn’s rings and sharing his star lore with us after dark, albeit the clouds. Mahalo to all our sustaining members that made the evening possible.

**UH MANOA SURVEY CLASS** Plans are in the works for a Surveying Geomatics class for UH Manoa in the Fall of 2023. Three HLSA members are tentatively scheduled to instruct the class. This will be the first surveying class at UH in many years. It will be a part of the Civil Engineering program and will be a 15 week, sophomore level course.

**OUTREACH PLANS** The members on the board are taking the lead on various projects that are in the works.

Real Estate and Title Company Outreach: We are looking forward to resuming outreach and education for the Realty Profession on the value of surveying for their industry.

Hawaii Community College (Hilo) is considering making the Geomatics & GIS certificates available again to students in 2023. The AEC program was cut a few years ago. HLSA has sent a letter to the HCC Education Committee in support of efforts to develop, or redevelop their Geospatial Technologies and Geomatics offerings and will continue to dialog with them.

Unlicensed practice issues are ongoing in our state. The next legislative efforts will be focused on the purvey of activities that fall under the survey license, and it will address the penalties for survey practice without a license. The bill is not ready for the final draft as we are looking for feedback from our fellow EASLA professions. (Engineers, Architects, Surveyors and Landscape Architects)



# NSPS DAY ON THE HILL

## NSPS Day on the Hill, March 29: Save the Date

Make plans to attend the 2023 NSPS Day on the Hill scheduled for March 29, 2023. NSPS members will travel to Capitol Hill in Washington, DC to meet with members of the U.S. House of Representatives and Senate, and their staffs to discuss (1) the need for improved broadband mapping and deployment of the related telecom infrastructure given the billions of Federal infrastructure dollars to be invested; (2) reauthorization and reform of the National Flood Insurance Program (NFIP) in the Federal Emergency Management Agency (FEMA), including the NSPS-backed legislation known as the IMAGES Act; and (3) recognition of the importance of professional licensing in surveying and other design professions to protect public health, safety, and welfare and distinguishing these disciplines from other occupational licenses that have been the subject of de-licensing efforts. Members from all 50 states are invited and encouraged to participate in the citizen lobbying activity associated with the NSPS Business Meeting. Day on the Hill registration will open on January 30 and close on March 3. NSPS will make all appointments for meetings with lawmakers. A training webinar is set for Monday, March 20 at 2:00 pm EDT.

NSPS Day on the Hill, March 29: Save the Date, 'NSPS News & Views', <https://multibriefs.com/briefs/nsps/>, (accessed 26 January 2023).





# EMPLOYMENT OPPORTUNITIES



HAWAII ENGINEERING GROUP, INC.

Hawaii Engineering Group, Inc. is a full-service civil, structural and electrical consulting engineering and land surveying firm that specializes in commercial, industrial and residential projects. With over 25 years of experience in the industry, we recognize that we are only as successful as the people we employ.

## **SURVEY PARTY CHIEF (HONOLULU):**

HAWAII ENGINEERING GROUP, INC. IS LOOKING FOR A SURVEY PARTY CHIEF FOR A LONG-TERM FULL-TIME POSITION.

- PERSON MUST BE DEPENDABLE, HAVE A DRIVER'S LICENSE, BE A U.S. CITIZEN, HAVE NO FELONY CONVICTIONS AND BE ABLE TO TRAVEL.
- EXPERIENCE MUST INCLUDE 5 YEARS FIELD WORK EXPERIENCE IN ALTA, TOPOGRAPHIC, BOUNDARY AND CONSTRUCTION SURVEYS. AUTOCAD AND TDS DATA COLLECTOR EXPERIENCE A PLUS. MUST HAVE EXPERIENCE AS A PARTY CHIEF.
- SEND RESUME TO: [HEGADMIN@HAWAIIENGINEERING.NET](mailto:HEGADMIN@HAWAIIENGINEERING.NET)
- SALARY: NEGOTIABLE WITH EXPERIENCE
- BENEFITS: MEDICAL, 401K, PROFIT SHARING, PAID VACATION & SICK LEAVE



# EMPLOYMENT OPPORTUNITIES



ParEn, Inc. □ dba **park engineering**

ParEn, Inc. dba Park Engineering is an employee-owned, small business enterprise providing civil engineering and surveying services to clients throughout the State of Hawaii. As one of the leading engineering and surveying firms in Hawaii, Park Engineering has played an important role in the development and growth of our island community for the past 70 years.

## Land Surveying Field Technician: Rodman (Full-Time)

The Survey Rodman will be responsible for assisting the Party Chief in the performance of field work on all types of surveying projects.

### General Responsibilities:

- Transporting and setting up equipment and instruments necessary for the survey.
- Preparing the job site for a survey, such as, clearing out the areas of vegetation or debris.
- Holding the prism staff and using of all tools necessary to complete the survey.
- Keep the company vehicle, tools and equipment clean and orderly.
- Inform the Party Chief or management of any safety concerns.
- Comply with all safety requirements.
- Able to take instructions from the Party Chief and work with others.

### Requirements:

- High School Diploma or GED preferred.
- Maintain a valid driver's license.
- Work in various work environments.
- Able to lift up to 50-lbs.
- Knowledge with basic mathematics and reading numerals.

Advancement opportunities are available.

Email Resume: [wteruya@pareninc.com](mailto:wteruya@pareninc.com)



# EMPLOYMENT OPPORTUNITIES



## **WES THOMAS ASSOCIATES**

*-Land Surveyors-*

75-5749 Kalawa Street, Suite 201, Kailua-Kona, Hawaii 96740

Phone: 808.329.2353 - Fax: 808.329.5334

[surveys@wtahawaii.com](mailto:surveys@wtahawaii.com) - [www.wtahawaii.com](http://www.wtahawaii.com)

*Wes Thomas Associates has been surveying in Hawai'i since 1975. This has allowed us the luxury of dedicating our staff, equipment, and facilities to this single specialized profession.*

*Our office is conveniently located in Kailua-Kona on the Big Island of Hawai'i and is managed by our President and Chief Surveyor, Chrystal Thomas Yamasaki, LPLS. Our staff has an aggregate experience of over 100 years of providing professional land surveying services in Hawai'i. Surveying is the primary focus of the firm, and we have completed thousands of individual survey projects since our inception.*

### **POSITION AVAILABLE: SURVEY PROJECT MANAGER (KONA, BIG ISLAND)**

#### Position Summary:

- Full-time position available for experienced survey project manager.
- You will be working closely with land surveyors, other project managers and CAD personnel.
- Expectations include: acquisition of field data, analysis of research and field data, preparation of project computations for use by CAD personnel and ultimately delivery of a final product for the client.
- Pay will depend on level of experience, certifications and licenses, if any.
- Our firm offers Medical, Dental and Paid Vacation and Sick Leave (at anniversary date)
- Inquire for more information/Send Resume to: [surveys@wtahawaii.com](mailto:surveys@wtahawaii.com) or call **(808) 329-2353**



## podcasts for the surveying profession



Please check out Mentoring Mondays for informational presentations to help build our knowledge in this profession.

[WWW.MENTORINGMONDAYS.XYZ](http://WWW.MENTORINGMONDAYS.XYZ)



## surveyor says THE NSPS PODCAST

Want to hear from the movers and shakers of the surveying profession? Each week, NSPS brings you conversations with the trendsetters and difference-makers that are helping to shape the world of surveying. Your hosts, NSPS Executive Director Curt Sumner and NSPS President-Elect Tim Burch sit down with various personalities to discuss all things surveying, all bundled in a 30-minute conversation.

Download episodes of "Surveyor Says! - The NSPS Podcast" from your favorite streaming providers or find them at our podcast hosting site, Podbean. Watch our social media outlets for upcoming episode news and contests/giveaways on special occasions.

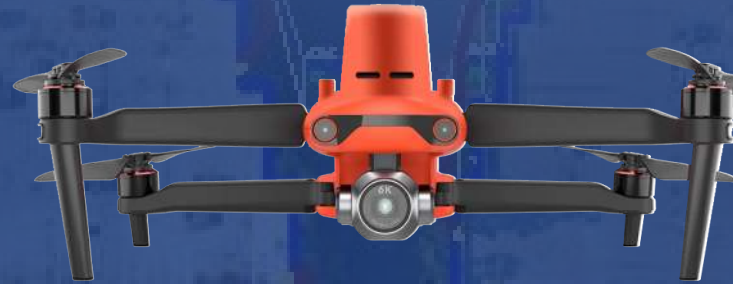
And remember - "It's a great day to be a surveyor."

[HTTPS://SURVEYORSAYS.PODBEAN.COM/](https://surveyorsays.podbean.com/)

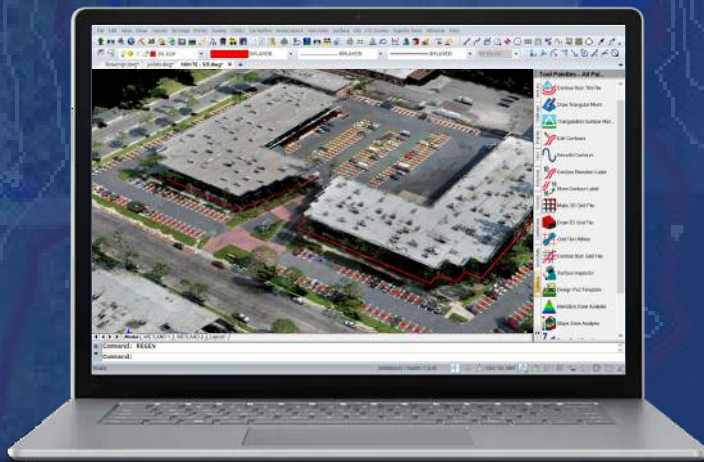
# PUT YOURSELF IN THE BEST POSITION WITH THE INDUSTRY'S LEADING TOOLS



# BRx7



## Autel EVO II Pro RTK



# RT4 SurvPC 7



# Carlson 2023

**NO ONE MAKES YOU MORE EFFICIENT AND EFFECTIVE**



## HLSA 2023 CONFERENCE GOLD SPONSOR

### Ask About Bundles and Pricing From Carlson

# 2023 PACIFIC RIM GEOSPATIAL CONFERENCE



## Mahalo Nui Loa!

Stantec appreciates the Alaska Society of Professional Land Surveyors (ASPLS), Hawaii Land Surveyors Association (HLSA), and Hawaii Geographic Information Coordinating Council (HIGICC) conference attendees for the Aloha and opportunity to present at this year's conference. We are proud members of these organizations and will continue to show our support by attending, sponsoring, and presenting at these events.

## Meet Our Local Staff



**Victor Rasgado** LPLS  
Senior Surveyor  
(808) 208-2837  
[victor.rasgado@stantec.com](mailto:victor.rasgado@stantec.com)



**Brett Etheredge** LPLS  
Surveyor Manager  
(808) 348-7664  
[brett.etheredge@stantec.com](mailto:brett.etheredge@stantec.com)



**Ben Berridge** PMP, AICP  
Pacific Branch Manager/Senior Project Manager  
(808) 531-9407  
[benjamin.berridge@stantecgs.com](mailto:benjamin.berridge@stantecgs.com)

## Meet Our Speakers



**Stephanie Clarke** GISP  
(858) 314-6896  
[stephanie.clarke@stantecgs.com](mailto:stephanie.clarke@stantecgs.com)

**Topic:** Past and Present: Examining Land Use Change Over Time Using Aerial Imagery  
**Date and Time:** Thursday, March 16th at 9:30 AM



**Matthew Vernon** PLS  
(805) 377-9156  
[matthew.vernon@stantec.com](mailto:matthew.vernon@stantec.com)

**Topic:** Public Lands Survey System (PLSS)  
**Date and Time:** Thursday, March 16th at 9:30 AM

**Topic:** Business and Marketing for Land Surveyors and GIS Professionals  
**Date and Time:** Friday, March 17th at 10:55 AM



**Bernardo Gonzalez**  
[bernardo.gonzalez@stantec.com](mailto:bernardo.gonzalez@stantec.com)

**Topic:** sUAS for Surveying I—Preparation for Part 107 Certification and sUAS for Surveying II—Planning and Execution  
**Date and Time:** Friday, March 17th at 1:10 PM



**John Brady** PLS, CMS  
(907) 712-4305  
[john.brady@stantec.com](mailto:john.brady@stantec.com)

**Topic:** sUAS for Surveying I—Preparation for Part 107 Certification and sUAS for Surveying II—Planning and Execution  
**Date and Time:** Friday, March 17th at 1:10 PM



Want to learn more about Stantec? [CLICK HERE](#)

# TIRED OF PLUMBING UP THE POLE ?

It's Now A Thing Of The  
Past With The Worlds  
Smartest Pole!

## The New Leica AP20 AutoPole!

- Tilt Compensation
- Automatic Pole-Height Input
- Target ID
- Works with Leica TS16-MS60



- No more plumbing up the pole! With tilt compensation, increase productivity & measure more points a day conveniently and comfortably, while maintaining high accuracy standards!
- Auto Pole-Height functionality will automatically input updated pole-height measurements into the data collector as the pole-height changes to ensure reliable and accurate measurements. No more Rod-Height Errors!
- Automatic target search, identification, and locking prevents locking to foreign targets and avoids other interruptions that can occur on a busy site.

**Surveyors Supply Company**  
(808)676-7944  
Tyler@surveyorshawaii.com





**Surveyors,  
Contractors,  
& Drafting  
Supplies**

**Instrument  
Rental & Repair**

*"Hubs Hawaii Inc. is a locally owned and operated company since 1987 and will continue to serve the state of Hawaii with surveying equipment, supplies, accessories, rentals, and repairs."*



### **Hubs Hawaii Inc.**

85 Po'okela Street  
Hilo, HI 96720

**Phone: (808) 961-3223**

Email: [hubs1@hawaiiantel.net](mailto:hubs1@hawaiiantel.net)

Website: [www.hubshawaii.com](http://www.hubshawaii.com)

**SPECTRA**  
GEOSPATIAL

**FOCUS 50**

FOCUS 50  
FOR EVERY WAY YOU WORK

[spectrageospatial.com](http://spectrageospatial.com)

The Spectra Geospatial® FOCUS® 50 is a robotic total station you can customize to fit your needs. Available in three models, with your choice of accuracy, the FOCUS 50 features the smoothness of MagDrive™, the stability of SurePoint™, and it is compatible with the latest Spectra Geospatial Origin software. The incredibly versatile instrument can be used with the Ranger 5, the Ranger 7, or a tablet. Easy-to-use, affordable and tough, the FOCUS 50 delivers high performance and versatility to tackle a variety of challenging and everyday surveying tasks.



The Trimble® X12 Scanning System unites the best of both worlds with industry-leading hardware and Trimble's powerful, ultra-efficient Trimble Perspective software for guaranteed peak performance. No more complicated workflows. No complex registration process. No compromises in accuracy, speed, range, or imaging.



# TRIMBLE X12

## 3D LASER SCANNING SYSTEM

ACCESSIBLE HIGH-END 3D LASER SCANNING SYSTEM WITH SUPERIOR SPEED, ACCURACY, RANGE, AND INCREDIBLE IMAGE CLARITY.

Want more information? Contact:

**Brennan O'Neill, Geospatial Sales Representative**  
brennan@frontierprecision.com  
808.465.3900 | 808.824.0336 [Direct / Cell]

**Frontier Precision**  
2144 Auiki Street  
Honolulu, HI 96819





## 2023 SUSTAINING MEMBERS

8TH AXIS INDUSTRIAL, LLC  
AKAMAI LAND SURVEING  
AUSTIN, TSUTSUMI & ASSOCIATES, INC.  
CARLSON SOFTWARE  
CONTROLPOINT SURVEYING, INC.  
DUDEK  
ENGINEERS SURVEYORS HAWAII  
ESAKI SURVEYING AND MAPPING, INC.  
FRONTIER PRECISION  
HAWAII ENGINEERING GROUP, INC.  
HUBS HAWAII  
KN SURVEYING, LLC  
PAREN, INC. DBA PARK ENGINEERING  
R. M. TOWILL CORPORATION  
SAM O. HIROTA, INC.  
STANTEC  
SURVEYOR'S SUPPLY CO., INC.  
WES THOMAS & ASSOCIATES, INC.

## 2022 OUTER ISLAND LIAISONS

BIG ISLAND :  
VICTOR RASGADO  
[VICTOR.RASGADO@STANTEC.COM](mailto:VICTOR.RASGADO@STANTEC.COM)

MAUI:  
DUDLEY DEPONTE  
[DUDLEY@AKAMAISURVEY.COM](mailto:DUDLEY@AKAMAISURVEY.COM)

KAUAI:  
DENNIS ESAKI  
[DENNIS@ESAKIMAP.COM](mailto:DENNIS@ESAKIMAP.COM)

## 2022 BOARD OF DIRECTORS

PRESIDENT: VICTOR RASGADO  
EMAIL: [VICTOR.RASGADO@STANTEC.COM](mailto:VICTOR.RASGADO@STANTEC.COM)

VICE PRESIDENT: CLIFF YIM  
EMAIL: [CLIFFYIM@OUTLOOK.COM](mailto:CLIFFYIM@OUTLOOK.COM)

TREASURER: ALIKA GARO  
PHONE: 808-237-3223

SECRETARY: BRETT ETHEREDGE  
EMAIL: [BRETT.ETHEREDGE@STANTEC.COM](mailto:BRETT.ETHEREDGE@STANTEC.COM)

DIRECTOR: ERICK WENCESLAO  
EMAIL: [EWENCESLAO@DUDEK.COM](mailto:EWENCESLAO@DUDEK.COM)

DIRECTOR: MEYER CUMMINS  
EMAIL: [MEYERCUMMINS@HLCSURVEY.COM](mailto:MEYERCUMMINS@HLCSURVEY.COM)

DIRECTOR: DUDLEY DEPONTE  
EMAIL: [DUDLEY@AKAMAISURVEY.COM](mailto:DUDLEY@AKAMAISURVEY.COM)

DIRECTOR: LAUTISHA MCKINNEY

NSPS DIRECTOR: JOANNE WILLIAMSON  
PHONE: 808-543-7881

PAST PRESIDENT: CHRISTINA VILLA

NEWSLETTER EDITOR: CHRISTINA VILLA