

Volume 38 :: Issue 2

POINT TO POINT

LAE I LAE

Comprised of approximately 70% of the Licensed Land Surveyors in Hawaii. Our objective is to bring together the Land Surveying Community through education and to provide networking opportunities and business resources

Lae I Lae

A newsletter from the Hawaii Land Surveyors Association, an affiliate and a member with the National Society of Professional Surveyors.

Contact

EMAIL: hlsa-hawaii@outlook.com

WEBSITE: www.hlsahawaii.org



President's Message

By: Beverly Pascual, LPLS

Aloha HLSA members and supporters,

First of all, I would like to thank you all for your continued support and membership. In March 2025, I was honored to be nominated and elected for the position of President of HLSA.

As newly elected president, I would first like to thank the previous leadership for their hard work and dedication over the past year, as well as the years previous. It was their efforts that have shaped our organization into what it is today, and I am honored to continue the journey of HLSA with all of you. In this role, I promise to work diligently to uphold our organization's values and address the challenges that we as land surveyors face.

As we move forward, I am committed to fostering an environment of growth, collaboration, and innovation. I believe that everyone in our organization is important and has valuable insights to contribute.

I firmly believe that together we have the ability to direct and shape the surveying profession into one that both respects the past and embraces the future.

Thank you all once again. I am excited for what we will achieve together.



Events

HLSA Events

June 2025 HLSA - HIGICC
Geospatial Expo on Maui



Recent Past Events

- March 2025: HLSA-HIGICC Geospatial Conference
- June 2025: Maui Geospatial Conference

Upcoming Events

- HLSA's Annual Dinner:
 - Tentative Date: October/November 2025
 - Location: Keehi Lagoon
- HLSA's Annual Conference
 - Tentative Date: February/March 2026
 - Location: Venue TBD

HLSA conference is being planned, we will update you with venue and dates once they have been finalized.

Lae I Lae - Volume 38 :: Issue 2

March 2025 HLSA - HIGICC Pacific Rim Geospatial Conference

The 2025 Pacific Rim Geospatial Conference was held at Ala Moana Hotel on March 5th and 6th. The Key Note Speakers were Nik Smilovsky and Dr. Danielle Smilovsky, speaking on "Laulima: Building Geospatial Bridges". The Geoholics Podcasters also broadcasted live, and interviewed many attendees and HLSA / HIGICC Board members.

[*The Geoholics Podcast - Pacific Rim*](#)

[*Geospatial Conference*](#)

click on the link above if you missed it



June 2025 HLSA - HIGICC Geospatial Expo on Maui



The first joint Geospatial Expo on Maui was held on June 13th at the Malcolm Center in Kihei, Maui. Various presenters from Maui, as well as other islands, presented on topics relating to GIS, Land Surveying, GPS techniques, and many more. Frontier Precision was both a presenter and sponsor! Thank you to all of the presenters and attendees that took time out of their busy schedule to make this expo a success.



2025 SUSTAINING MEMBERS AND SPONSORS



Kamehameha Schools®



CITY AND COUNTY OF
HONOLULU



Miller Creek
ASSOCIATES

DUDEK



ParEn, Inc. dba park engineering

FRONTIER
How You Measure Matters
PRECISION



QUIET RIVER
— Land Services Inc. —



HAWAII
ENGINEERING
GROUP, INC.

Consulting Civil Engineers, Structural Engineers & Land Surveyors



Sam O. Hirota, Inc.
864 South Beretania Street
Honolulu HI, 96813



Stantec

Want to support the Hawaii Land Surveyors Association and have your logo displayed on our website?

Visit: <https://hlsahawaii.org/sponsors>



HLSA Board of Directors



President

Beverly Pascual
Stantec
president@hlsahawaii.org



Vice President

Kenneth Daniel
Sam O. Hirota, Inc.
vicepresident@hlsahawaii.org



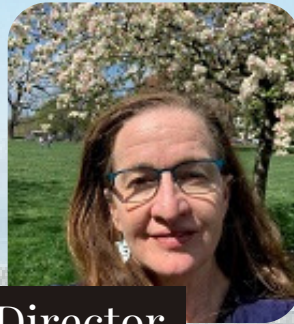
Secretary

Ryan Morales
State of Hawaii-
DAGS Survey Division
secretary@hlsahawaii.org



Treasurer

Lin Sun
ControlPoint Surveying, Inc.
treasurer@hlsahawaii.org



NSPS Director

Joanne Williamson
Hawaiian Electric Company
npsdirector@hlsahawaii.org



Director

Victor Rasgado
Stantec
director@hlsahawaii.org
BIG ISLAND LIASON



Director

Joe Charles-Ulii, Jr.
DHO JV
director@hlsahawaii.org



Director

Nathan Mashiyama
R. M. Towill Corporation
director@hlsahawaii.org

LIASONS

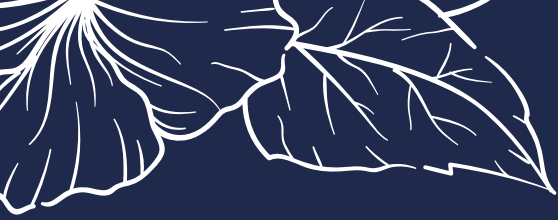
MAUI LIASON
Loren "Erich" Slentz
maui@hlsahawaii.org

LEGISLATIVE LIASON
Meyer Cummins
legislative@hlsahawaii.org

NEWSLETTER EDITOR
Christina Villa
newsletter@hlsahawaii.org

WEBSITE MANAGER
Alika Garo
website@hlsahawaii.org





In Honor and Memory of

James R. Thompson, LPLS

Born: January 10, 1943

Passed: May 27, 2025



August 2, 2025

St. Peter's Episcopal Church
1317 Queen Emma Street
Honolulu, Hawaii 96813





Celebration of Life For Jim Thompson

August 2, 2025

St. Peter's Episcopal Church
1317 Queen Emma Street
Honolulu, Hawaii 96813



Order of Service

10:00 AM

Visitation

11:00 AM

Service

12:00 PM

Refreshments



May the love and support of family and friends be
a source of strength during this difficult time.





In Memoria

James R. "Jim" Thompson was born in Honolulu on January 10, 1943, and passed away peacefully in Kailua on May 27, 2025, surrounded by close family. He will be remembered by those who knew him for his unwavering integrity, quiet kindness, and deep dedication to the land surveying profession.

Following in the footsteps of his father, Walter P. Thompson, Jim devoted his life to the family business, Walter P. Thompson, Inc., where he began working as a 14-year-old summer rodman on a survey crew. His early start marked the beginning of a lifelong career defined by technical excellence and service to his profession and to his community.

Jim grew up in Kalihi and Kaimuki and was a proud graduate of Roosevelt High School. He earned a Bachelor of Science degree in Industrial Construction Management from Colorado State University in 1966. Shortly after, he served in the Hawaii National Guard, 29th Infantry Brigade, from 1966 to 1970.

After completing his military service, Jim joined Walter P. Thompson, Inc. full time. He became a licensed professional land surveyor in 1974 and achieved his Land Court license in 1977. In 1976, he assumed the role of company president, leading the firm with vision and commitment for decades.

Jim was a dedicated member of the surveying community. He actively participated in the American Congress on Surveying and Mapping (ACSM), later the National Society of Professional Surveyors (NSPS), and maintained a long-standing sustaining membership with the Hawaii Land Surveyors Association (HLSA). Over the years, he served in various leadership roles on the HLSA Board of Directors.

A passionate educator and mentor, Jim taught at Honolulu Community College as part of the Engineering Technologies Program. He regularly gave presentations at HLSA annual conferences and to real estate professionals, sharing his knowledge and promoting a deeper understanding of the surveying field.

In recognition of his contributions, Jim was honored with the HLSA Surveyor of the Year Award in 2013 and the prestigious HLSA Lifetime Achievement Award in 2015.

Jim Thompson leaves behind a legacy of excellence, humility, and service. His lifelong commitment to the land surveying profession enriched our community and strengthened the foundation for future generations. We are privileged to follow in his footsteps. He will be missed.

